

# BOOK SEWING MADE SIMPLE!



## Super Sewer™

The ODM Super Sewer™ – *Ideal for Sewing Short Run Books On-Demand!*

The Super Sewer™, an automatic in-line sewing machine is, designed for on-demand photo books, yearbooks, journals, children's (juvenile) books and thin (up to 1/2" thick) text books. Easy to operate with a touch screen control panel. Super Sewer™ features **Back Tack Technology™** simply put, the sewing machine does a reverse back stitch on the head and foot of the book block. This ensures a very strong side sew which will not come apart at the head and foot like standard side sewn books do. The Super Sewer™ can stitch up to 10 books per minute; *that's 600 books per hour.*

### NEW! BACK TACK TECHNOLOGY™

- Automatically back sews both head and foot of each book
- Lock-stitch sewing

### STANDARD FEATURES:

- Self-adjusting, automatic in-line sewing machine
- Easy-to-operate LCD touch screen control panel
- Safety guard box lifts open for easy access
- Hopper delivery neatly stacks sewn books
- Quick change bobbin
- Book Size: Min. 3" x 5"; Max. 11" x 14"; up to 1/2" thick



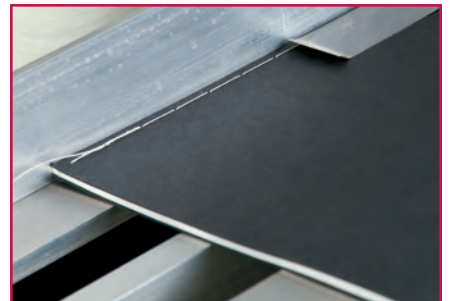
Touch Screen Control Panel



Quick Change Bobbin



Self-adjusting, Automatic, In-line Sewing



Back Sewing Ensures a Strong Side Sew

# Super Sewer™

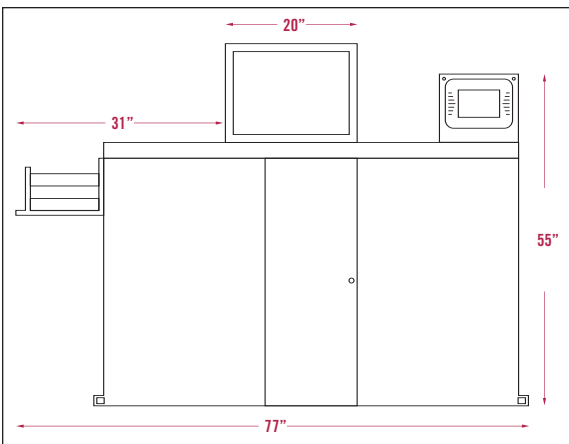


## ODM IN-LINE SEWING MACHINE

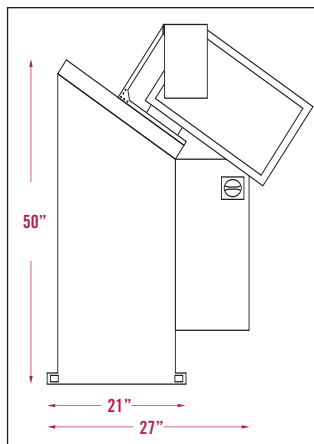
**ODM Super Sewer™ Machine Offers Outstanding Value, Quality, and Performance!**

SPECIFICATIONS & TECHNICAL DATA:	SUPER SEWER™ MODEL	STANDARD EQUIPMENT for the SUPER SEWER™ IN-LINE SEWING MACHINE INCLUDES:
Maximum Book Size:	11" x 14" x 1/2"	• Self-adjusting, automatic in-line sewing machine
Minimum Book Size:	3" x 5" x 1/32"	• <b>Back Tack Technology™</b> ensures a strong side sew
Output (per hour):	up to 600 books	• Easy-to-operate LCD touch screen color control panel
Floor Space:	77" x 42"	• Safety guard box lifts open for easy access
Net Weight:	850 lbs.	• Hopper delivery neatly stacks sewn books
Power Required:	220 Volt, Single Phase 10 Amps, Air 70 PSI	• Quick change bobbin
		• Lock-stitch sewing

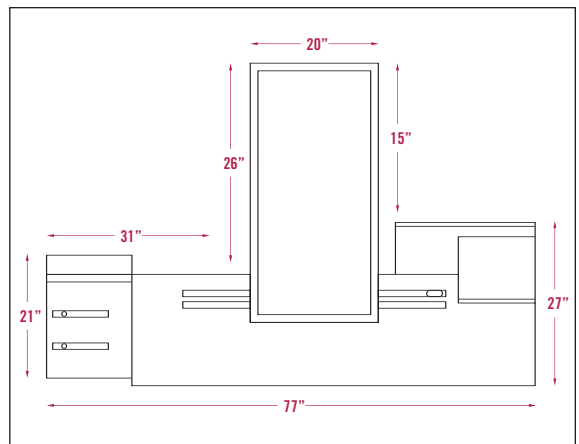
**DIMENSIONS: FRONT VIEW**



**SIDE VIEW**



**OVERHEAD VIEW**



### BACK TACK TECHNOLOGY™

- Automatically back sews both head and foot of each book.
- Lock-stitch sewing... ensures a strong side sew.
- Stitch up to 600 books per hour.



**ODM FREE TECH SUPPORT: 908-351-6906**

150 Broadway, Elizabeth, NJ 07206 • Tel: 908-351-6906 • Fax: 908-351-7156 • www.ODMachinery.com